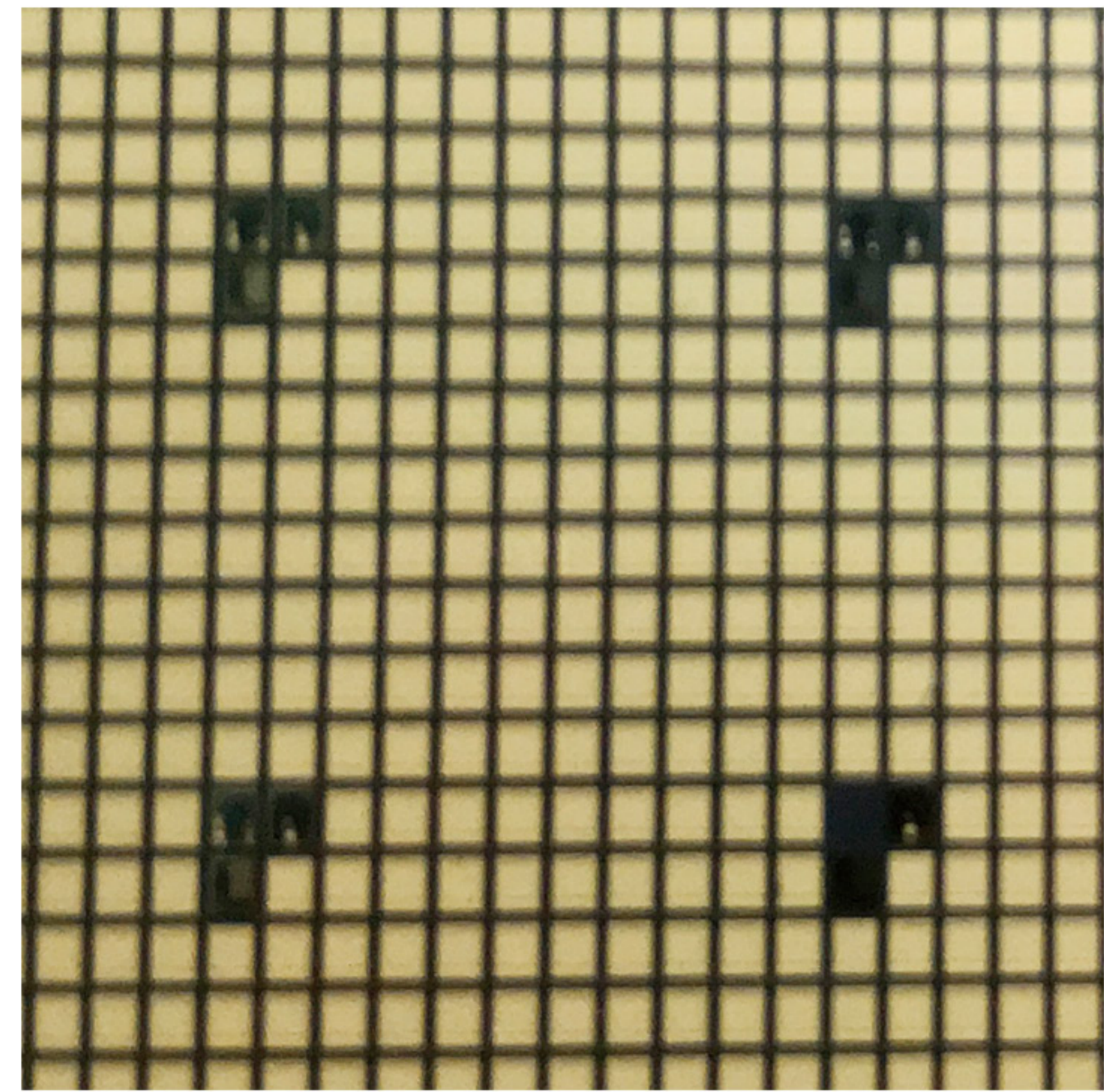


Laser Chip VCSEL-TOF



Application

3D Sensing

Biomedical

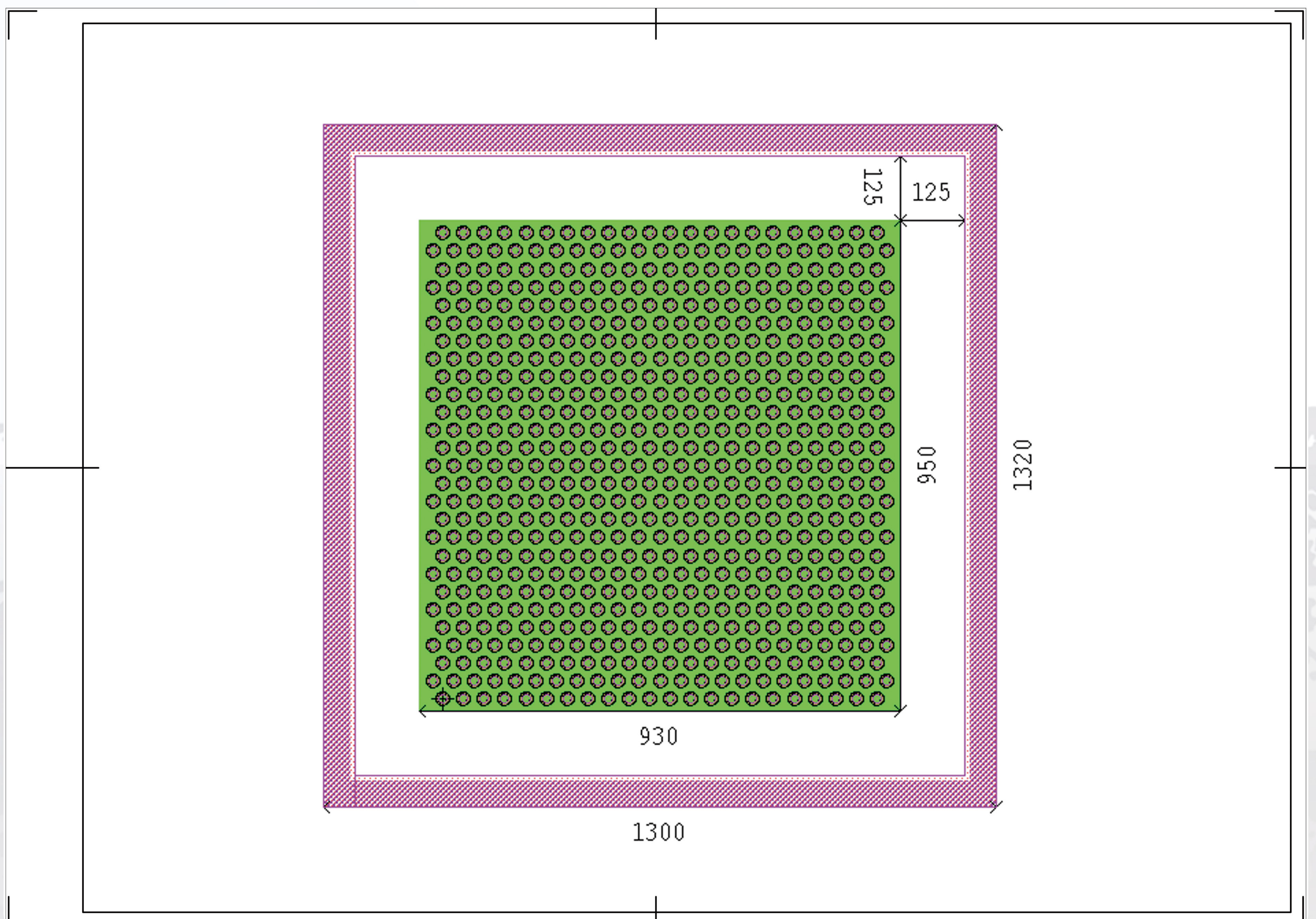
Features

High Stability

Long Lifetime

High Efficiency

Customizable



TOF Serial		Item Number ¹ EB-VCSEL-TOF-3-0940		
Parameter	Unit	Min	Type	Max
Optical²				
Center Wavelength@Iop ⁶	nm	930	940	950
Spectral width (half width)	nm		1	
Wavelength temperature coefficient	nm/°C		0.07	
Light aperture ⁶	μm	9	10	11
Minimum spacing of arrays ⁶	μm		40	
Number of light points			607	
Output Power ⁵⁶	mW		3000	
Operating current	mA		3800	
Power consumption	mW		7500	
Operating Voltage	V		2	
Operating efficiency	%	35	40	
Threshold current	mA		600	
Divergence angle ⁴	°	23	25	27
Geometric size				
Luminous zone length	μm		950	
Light-emitting area width	μm		930	
Chip length	μm		1320	
Chip width	μm		1300	
Chip thickness	μm	90	100	110
Notes				
1. Explanation of Item Number: EB (Everbright In Short) -VCSEL (Vertical Cavity Surface Emitting Laser in short) -TOF (Suitable for flight time scenarios) -3 (QCW Output Power is 3W) -940 (Center Wavelength is 940nm)				
2. Above Data Test at 25°C, Unless otherwise stated.				
3.Storage Temperature is -40°C-120°C, Operating Temperature is 0°C-70°C				
4.Full width@ 1/e ²				
5.Exceeding the normal power range will shorten the service life				
6..Customers can customize wavelength, power, aperture, spacing, etc.				
Version: XP08-1811D-R01				



Suzhou Everbright Photonics Co., Ltd
 Bldg 2, No. 189, Kunshanshan Road,
 Suzhou Science&Technology Town,
 Suzhou New District

www.everbrightphotonics.com
 sales@everbrightphotonics.com
 +86-512-69372570



Notice: Everbright keep improving its products to provide our customers with outstanding quality and reliability. We may change the specification and product description without notice at any time. For complete details, please contact Everbright sales representative.