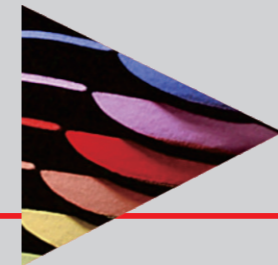
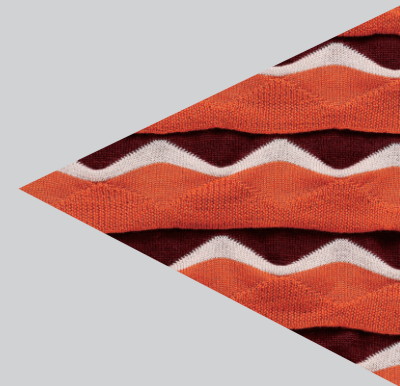




	STG3.132MC-3.5G	STG3.132MC-5.7G	STG3.132MC-7G	STG3.132MC-9G	STG3.132MC-12G	STG3.132MC-14G	STG3.132MC-16G	STG3.132MC-18G	
基本参数 ●标配 ○选配 -无									
编织系统	-	3系统	3系统	3系统	3系统	3系统	3系统	3系统	
针数(枚)	-	364	260	364	468	624	728	832	936
针板幅度(英寸)	-	52	52	52	52	52	52	52	52
机器速度(米/秒)	-	1.6	1.6	1.6	1.6	1.6	1.6	1.6	1.6
5.2英寸机头	-	●	●	●	●	●	●	●	●
电机款	-	●	●	●	●	●	●	●	●
摇床范围	-	±2英寸	±2英寸	±2英寸	±2英寸	±2英寸	±2英寸	±2英寸	±2英寸
选针器	-	8段电子选针	8段电子选针	8段电子选针	8段电子选针	8段电子选针	8段电子选针	8段电子选针	8段电子选针
沉降片	-	普通	普通	普通	普通	交叉式	交叉式	普通	普通
度目	-	0-650	0-650	0-650	0-650	0-650	0-650	0-650	0-650
换向	-	马达换向	马达换向	马达换向	马达换向	马达换向	马达换向	马达换向	马达换向
主罗拉	-	高位罗拉	高位罗拉	高位罗拉	高位罗拉	高位罗拉	高位罗拉	高位罗拉	高位罗拉
副罗拉	-	-	-	-	-	-	-	-	-
针距 ●标配 ○选配 -无									
标准针距	-	●	●	●	●	●	●	●	●
多针距	-	●	●	●	●	●	●	●	●
起底装置 ●标配 ○选配 -无									
起底板	-	●	●	●	●	●	●	●	●
剪刀机	-	●(2)	●(2)	●(2)	●(2)	●(2)	●(2)	●(2)	●(2)
无废纱起底	-	○	○	○	○	○	○	○	○
送纱器 ●标配 ○选配 -无									
储纱器	-	○	○	○	○	○	○	○	○
送纱器	-	●	●	●	●	●	●	●	●
积极送纱	-	-	-	-	-	-	-	-	-
纱嘴 ●标配 ○选配 -无									
16组纱嘴	-	●	●	●	●	●	●	●	●
32组纱嘴	-	-	-	-	-	-	-	-	-
智跑纱嘴	-	●	●	●	●	●	●	●	●
单孔	-	●(12)	●(12)	●(12)	●(12)	●(12)	●(12)	●(12)	●(12)
双孔	-	●(4)	●(4)	●(4)	●(4)	●(4)	●(4)	●(4)	●(4)
三孔	-	○	○	○	○	○	○	○	○
其它	-	○	○	○	○	○	○	○	○
安全装置(人) ●标配 ○选配 -无									
急停装置	-	●	●	●	●	●	●	●	●
前安全门	-	●	●	●	●	●	●	●	●
后安全门	-	●	●	●	●	●	●	●	●
红外线安全门	-	●	●	●	●	●	●	●	●
漏电检测	-	●	●	●	●	●	●	●	●
报警装置(设备) ●标配 ○选配 -无									
卷布报警(红外)	-	●	●	●	●	●	●	●	●
卷布报警(探测板)	-	○	○	○	○	○	○	○	○
断纱报警	-	●	●	●	●	●	●	●	●
撞针报警	-	●	●	●	●	●	●	●	●
过载报警	-	●	●	●	●	●	●	●	●
断电记忆	-	●	●	●	●	●	●	●	●
浮纱报警	-	●	●	●	●	●	●	●	●
控制系统 ●标配 ○选配 -无									
恒强系统(专用)	-	●	●	●	●	●	●	●	●
睿能系统	-	-	-	-	-	-	-	-	-
迈宏系统(专用)	-	-	-	-	-	-	-	-	-
LOGICA系统(自主)	-	-	-	-	-	-	-	-	-
尺寸及重量 ●标配 ○选配 -无									
长(米)	-	3000	3000	3000	3000	3000	3000	3000	3000
宽(米)	-	980	980	980	980	980	980	980	980
高(米)	-	2010	2010	2010	2010	2010	2010	2010	2010
重量(公斤)	-	1210	1210	1210	1210	1210	1210	1210	1210
自动加油、电源、气压配置及功率 ●标配 ○选配 -无									
自动加油	-	●	●	●	●	●	●	●	●
220V单相(50/60HZ)	-	●	●	●	●	●	●	●	●
380V三相(50/60HZ)	-	○	○	○	○	○	○	○	○
功率(KW)	-	1.5	1.5	1.5	1.5	1.5	1.5	1.5	1.5
空压机气压	-	0.6~0.8MPa	0.6~0.8MPa	0.6~0.8MPa	0.6~0.8MPa	0.6~0.8MPa	0.6~0.8MPa	0.6~0.8MPa	0.6~0.8MPa
配置 ●标配 ○选配 -无									
织针(天成)	-	○	○	○	○	○	○	○	○
织针(光阳)	-	-	-	-	-	-	-	-	-
织针(金鹏)	-	●	●	●	●	●	●	●	●
织针(格罗茨)	-	○	○	○	○	○	○	○	○
织针(三星)	-	-	-	-	-	-	-	-	-
织针(杉浦)	-	-	-	-	-	-	-	-	-
长针	-	金鹏	金鹏	金鹏	金鹏	金鹏	金鹏	金鹏	金鹏
弹簧针	-	金鹏	金鹏	金鹏	金鹏	金鹏	金鹏	金鹏	金鹏
针脚	-	金鹏	金鹏	金鹏	金鹏	金鹏	金鹏	金鹏	金鹏
三角底板	-	慈星精加工	慈星精加工	慈星精加工	慈星精加工	慈星精加工	慈星精加工	慈星精加工	慈星精加工
三角底板组件	-	慈星精加工	慈星精加工	慈星精加工	慈星精加工	慈星精加工	慈星精加工	慈星精加工	慈星精加工
针板材料	-	50#	50#	50#	50#	50#	50#	50#	50#
插片材料	-	SK5	SK5	SK5	SK5	SK5	SK5	SK5	SK5
三角材料	-	40Cr	40Cr	40Cr	40Cr	40Cr	40Cr	40Cr	40Cr
机架	-	铸件	铸件	铸件	铸件	铸件	铸件	铸件	铸件

注: 1、型号解释: "STG"表示事坦格, "M"表示智跑纱嘴, "C"表示起底板
 2、以上配置一定时间内可能有所调整, 最终以签订合同为准。
 3、以上专用配件为慈星自主研发产品, 市场上同类型产品不建议使用, 为了设备安全建议使用慈星原厂配件。
 4、标配为慈星出厂默认配置, 如果需要其它配置, 签订合同时必须注明。
 5、以上为常规机型配置清单, 特殊机型请咨询销售人员。



最快的编织速度

Fastest knitting speed
STG3.132MC 高效电脑横机

STG3.132MC

HIGH EFFICIENCY FLAT KNITTING MACHINE



宁波慈星股份有限公司
NINGBO CIXING CO.,LTD.

浙江省宁波市杭州湾新区滨海四路708号315336
 No. 708, Fourth Binhai Road, Hangzhou Bay New Area,
 Ningbo, Zhejiang, China 315336

T:+86 574 6307 1501 +86 574 6393 2094 (外贸)
 F:+86 574 6307 1186 +86 574 6393 2612 (外贸)
 E: sales1@ci-xing.com export@ci-xing.com (外贸)



www.ci-xing.com www.steiger-textil.ch

400 880 4777



KNITTING
TECHNOLOGY

ABOUT STEIGER

事坦格简介

瑞士事坦格，世界三大电脑横机品牌之一，
70年的电脑横机技术沉淀，
以其先进理念和高超技术，
同中国电脑横机操作习惯完美结合，
推出事坦格高效电脑横机STG3.132MC。

Switzerland Steiger is one of the three most famous computerized
flat knitting machine brands in the world,
It has developed the technology of computerized flat knitting
machine for more than 70 years,
With its advanced concept and high technology,
This technology is perfectly combined with the Chinese operation
habits of computerized flat knitting machine,
To introduce Steiger efficient
computerized flat knitting Machine— STG3.132MC。



SWISS KNITTING TECHNOLOGY

瑞士Steiger成立于1949，以其一贯秉承的创新主义和先驱精神而闻名。今天，Steiger是世界领先的电脑横机制造商之一。事实上，位于瑞士的Steiger是Steiger所有商业活动的中心枢纽，还包括调研、设计和生产。

2010年7月，Steiger正式成为宁波慈星股份有限公司的子公司。宁波慈星股份有限公司（股票代码：300307）是全球最大的智能针织机械供应商，是致力于提升中国针织机械技术水平、推动针织工艺发展进步、实现针织产业升级的国家级高新技术企业。如今，宁波慈星已经成为全球电脑横机领先制造商。

Steiger, in Switzerland, was founded in 1949, with its consistently uphold innovation and pioneering spirit. Today, Steiger, is one of the world's leading computerized flat knitting machine manufacturers. Steiger, in fact, is located in Switzerland which is the hub of all the steiger commercial activities, including R&D and production.

Since July, 2010, Steiger has been being a subsidiary of the Ningbo Cixing Co. Ltd which is one of the biggest intelligent knitting machine suppliers in the world. Ningbo Cixing Company (Stock Code: 300307) is a National level of High and new technology company who devotes to promote knitting machinery technology, realizes the knitting industries upgrading. Today, Ningbo Cixing is the leading manufacturer of computerized flat knitting machines all over the world.





Once again,
It refreshes all.
再一次 刷新一切

电动纱嘴
Motorized yarn feeder



全电机款
All moterized



自动加油
Auto-oiling

电机驱动换向
Motorized inversion bar

此机可同时生产毛衣、常规鞋面、填充鞋面、5D鞋面
sweater、common shoe upper,filling shoe uppar,5D shoe upper knitting

STG3.132MC 高效电脑横机

STG3.132MC

红外线安全门
Infrared safety door

智能穿线板
Intelligent threading board

编织过程中罗拉自动正反反转解决织片过厚拉不下来的问题
Fix the problem of knitting fabric too thickness to take down by roller

INNOVATIVE SERVICES
创新服务

TECHNICAL TRAINING 专业技术培训

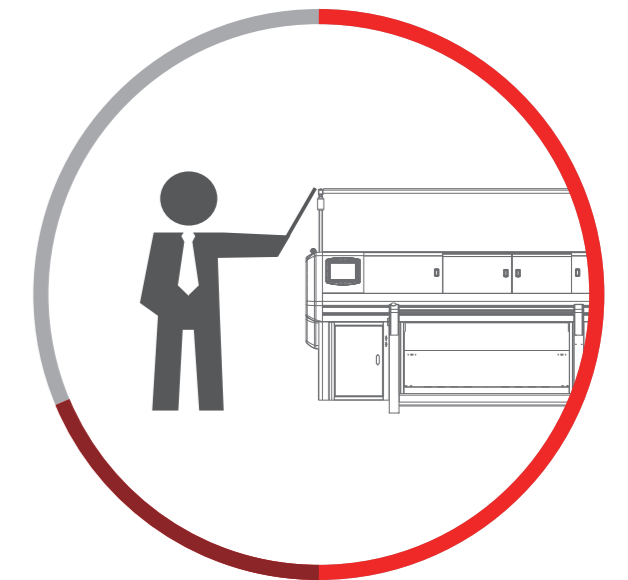


工厂培训

以持续创造客户满意为核心，在慈星总部专门设立客户培训中心，专门对客户的技术人员进行专业培训，还提供机器维修保养、花样设计等服务，全面解决客户难题，为客户效率最大化提供全面支持。

The factory training

Continue to create customer satisfaction as the core, set up customer training center at CIXing headquarters, to conduct professional training of customers' technical personnel, also provide services, such as machine maintenance, Pattern design, to fully solve customers' problem, provide comprehensive support to maximum customers' efficiency



现场培训

以客户为中心，慈星对重点市场开设“流动教室”，配置高水平的设备技师，派员在现场全方位为客户进行贴身培训。

On-site training

Take the customer as the center, CIXing opened "flow classroom" to key markets with high levels technicians, to send all round close-fitting training to customers on the spot.

STG3.132MC All New Steiger

AFTER-SALES SERVICE 卓越售后服务



安装调试服务

以客户为尊，慈星为客户提供上门安装调试服务，以保证机器设备安全、经济、可靠地运行。

Installation and debugging service

Customer respect, CiXing provide on the spot installation and debugging service for the customer, to ensure the machine running safely, economically, reliably.



技术支持服务

在全国设立慈星技术网点，为客户提供制版技术支持等相关服务。

Technical support services

Setting up Cixing service branches all over China to provide customers with programming support and other related services.



售后服务团队

通过由 500余人组成的专业服务团队，系统化的资源管理、辐射全国的50多个网点来为客户提供低成本、高效率 and 统一的本地化服务。

After-sales service team

By professional service team of more than 500 people, systematic resource management, radiation more than 50 branches throughout the country to provide customers with low cost, high efficiency and uniform localization services.



售后服务承诺

一年保修，终身维修服务。

After-sales service commitment

One year warranty, lifelong maintenance services.

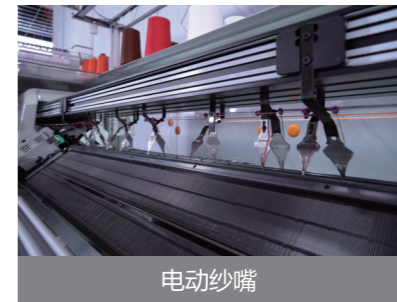
三系统智跑式纱嘴机型。在全电机款 5.2 寸高速高效机器上，增加了 16 把电动纱嘴。纱嘴由系统独立控制，可以在水平方向自由移动，使纱嘴能精准定位和同步喂纱，减少机头空行程，普通织物效率提升 10%-20%，特殊组织物提升 50% 以上，综合效率提升 20%-30%，可轻松实现嵌花、反向添纱、衬纬、镂空编织等特殊编织花型，增加了花型灵活性及多样化特点。

全新的智能穿线板装置可以无需废纱直接起底，根据织物的宽度可自动进行调整，配合伺服起底电机闭环精确控制，节省拆废纱的时间及废纱成本，可大大降低用工成本。

Three system Yarn feeders intelligent running machine type. This is high-speed and efficient machine use the 5.2-inch carriage with full electric motors controlled, 16 electric motorized yarn feeders are added. The yarn feeders are independently controlled by the system, which can move freely in the horizontal direction, so that the yarn feeders can be accurately positioned and fed synchronously, reducing the empty courses of the carriage, improving the efficiency of ordinary fabrics by 10% - 20%, the efficiency of special fabrics by more than 50%, and the comprehensive efficiency by 20% - 30%. It can easily realize the special weaving patterns such as intarsia, reverse filling, weft lining, hollow weaving, etc., increasing the flexibility and diversity of patterns.

The new intelligent threading board device can be adjusted automatically according to the width of the fabric without waste yarn directly knitting. Cooperate with the close-loop precise control of servo motor, it can save the time of removing waste yarn and the cost of waste yarn, which can greatly reduce the labor cost.

花型展示:

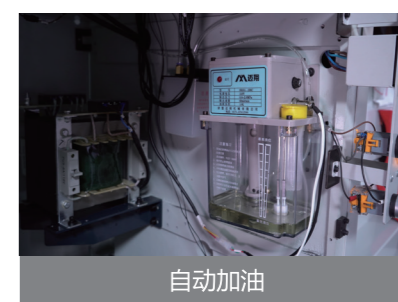


电动纱嘴

16 把纱嘴摆脱机头束缚，水平方向自由移动，由编码器精准反馈控制，让纱嘴停放更准确，配合系统单独控制进入编织区域，完成纱嘴精准定位和同步喂纱，可减少机头空行程，提高编织效率。同时可以实现一些特定的花型编织。

Motorized yarn feeder

16 PCS motorized feeder can move if freely, precise feedback control by encoder. Let yarn feeders stop position can be more accurately. They cooperate with the carriage system to move into the knitting area by independent control. So machine can do accurate positioning of yarn feeder and synchronous yarn feeding. It can reduce carriage empty courses, and improving knitting efficiency and realizing some specially designated patterns knitting.



自动加油

全自动加油装置，系统自定加油时间，时间到了以后自动给针板上的长针弹簧针加油润滑，避免人工加油次数及加油量不确定而引起的保养问题，大大增加机器的使用寿命。

Auto-oiling

Machine have fully automatic refueling device, system self-determined auto-oiling, when the time is up, automatically refueling and lubricating the jack and spring needles on the needle bed, avoiding the maintenance problems caused by uncertain artificial refueling times and refueling quantity, greatly increasing the service life of the machine.

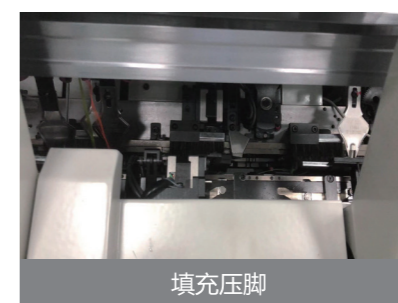


红外线安全门

在原有的透明安全门的基础上增加了红外线探测功能，机器在高速运行时，当有物品挡住红外线时，会自动触发报警停机，提高了机器及操作工的安全性。

Safety door with infrared sensor

The infrared detection function is added on the basis of the original transparent safety door. When there is something to blocking the infrared ray, the machine will automatically stop and alarm, which improves the safety of the machine and operators.

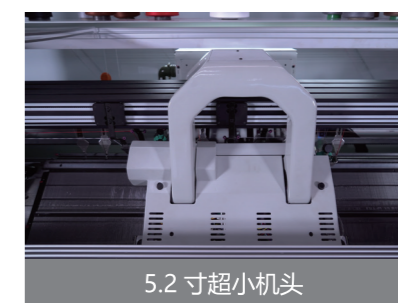


填充压脚

配合花型的使用，实现衬纬跟填充的功能，使花型的多样化。12G/14G 标配。

The stitch presser device for filled yarn

It work with the specially designated pattern, machine can do the function of filling and lining and can be realized to make the pattern more diversified. standard configuration 12G/14G.

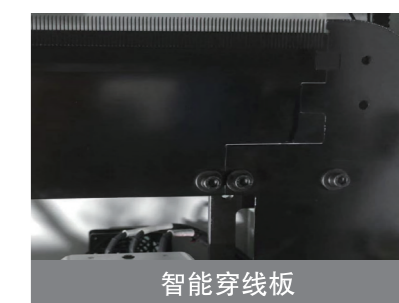


5.2 寸超小机头

采用 5.2 寸全电机款超小机头，提高机器稳定性，减少回转距离，提高编织效率。

5.2 inch super small carriage

Adopting 5.2 inch super-small carriage of all-motor control to improve machine stability, reduce carriage return distance and improve knitting efficiency.



智能穿线板

采用伺服器电机实现闭环高精度控制，不用费纱，减少人工，节约成本。

Intelligent threading board

close loop high precision control with servo motor ,no need to use waste yarn, reduce labor and save cost.